

In Vessel Visual Inspection (IVVI)

Visual Inspection Tools



IVVI for BWRs and underwater visual tests (VT) are frequently on the refuel outage critical path. Industry demands are also increasing the quality control and documentation requirements for these inspections. Complementing a large portfolio of high radiation and high definition cameras, AREVA NDE-Solutions has developed an array of tools to ensure quality compliance and shorten the overall outage schedule.

Submarine Visual Inspection Systems

An array of submarines are available for underwater visual tests. Some systems also include grabbers or suction units to retrieve foreign objects.

HawKEYE Visual Inspection Manipulator

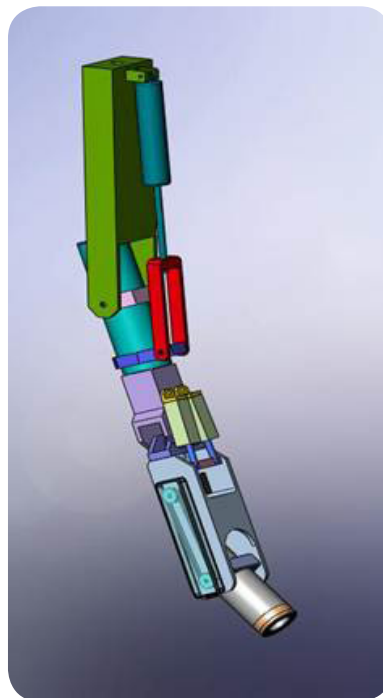
This translating and articulating manipulator mounts on either linear or circular supports. It delivers video cameras to target inspection areas with full-position feedback integrated into the video record.

Accurate IVVI Software

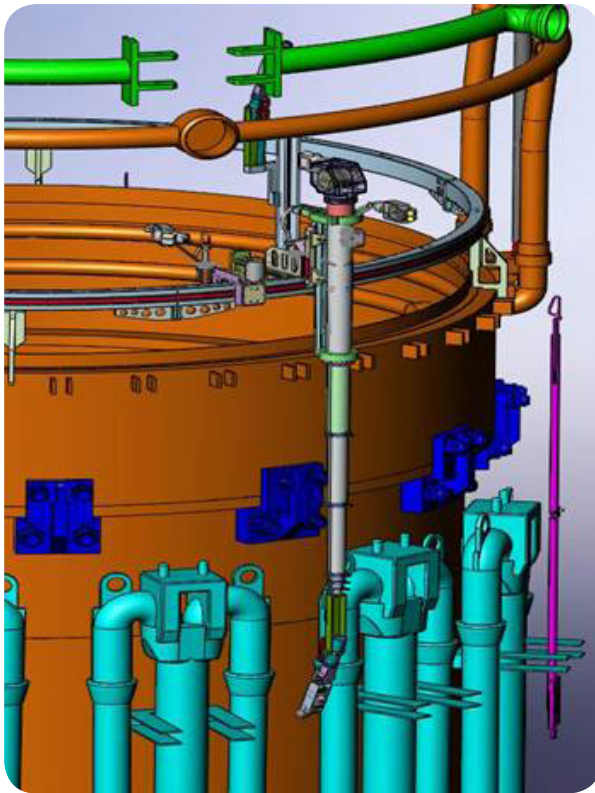
Live and still video images are organized in a manageable data base to produce the inspection report.

Features and Benefits

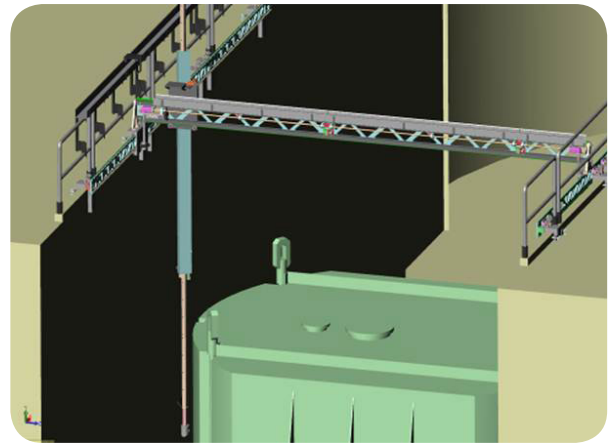
- HawKEYE automated inspection provides proof-of-camera position
- Submarine inspections are quickly performed with minimum outage impact
- ACCURATE IVVI software facilitates quality inspection reports
- Less dose than manual pole-manipulated inspections



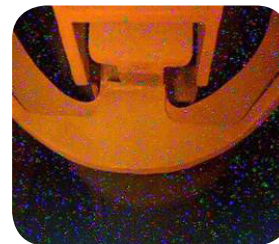
HawKEYE 3-DOF end effector



HawkEYE ring support for BWR shroud annulus

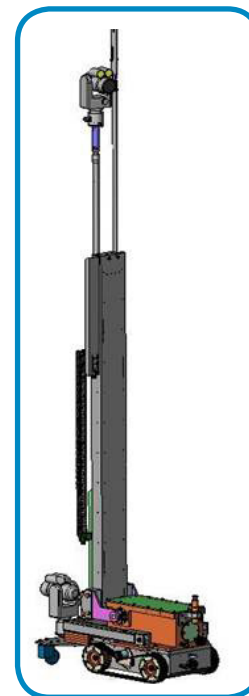


Gantry HawkEYE mast for steam dryer inspection



Radiation filter software eliminates corrupt pixels associated with high-dose inspections

» The industry is demanding higher quality and traceability. That's why the global resources of AREVA are responding quickly with advanced innovations for visual inspection tools.



Floor crawler mast

For more information contact AREVA NDE-Solutions Regional Sales Manager at
regional.manager@areva.com

U.S.: Eddie Ivins
 Office: +1 434 832 3781 Cell: +1 434 841 3562

France: Olivier Moulin
 Office: +33 14 978 4095 Cell: +33 62 879 6555

Germany: Florian Senne
 Office: +49 9131 900 96766 Cell: +49 151 14568545

The data and information contained herein are provided solely for illustration and informational purposes and create no legal obligations by AREVA. None of the information or data is intended by AREVA to be a representation or a warranty of any kind, expressed or implied, and AREVA assumes no liability for the use of or reliance on any information or data disclosed in this document. © 2013 AREVA Inc. All rights reserved.