

ASCO Component Services

AREVA: ASCO's Master Distributor

Since 2001, AREVA has been the Master Nuclear Distributor of Automatic Switch Company (ASCO), the nuclear industry's leading manufacturer of solenoid valves and pressure/temperature switches. This powerful collaboration began in 1992 as a nuclear distributor relationship and has evolved into a long-term, innovative alliance committed to providing ASCO components and high-quality services – efficiently, safely and reliably.

Around-the-Clock Service

At AREVA's Nuclear Parts Center (NPC), our personnel are on call around the clock, seven days a week, to deliver the right ASCO component, with the right documentation, at the right time. Routine next-business-day shipment is in place for customers with blanket purchase orders, and immediate shipments are possible in critical situations. In fact, NPC has shipped urgent orders in as little as 17 minutes.

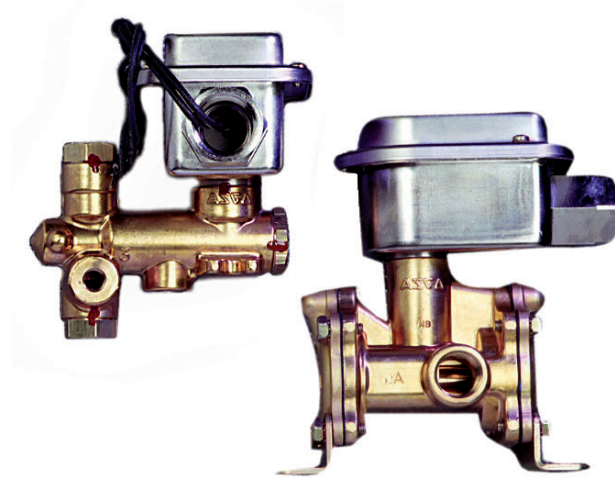
Unparalleled Service and Quality

With NPC, ASCO components and services are only one phone call away. As the most responsive nuclear parts group in the industry, NPC enhances the operability of today's nuclear power plants. How? By adhering to a simple philosophy: satisfy the customer – quickly and completely.

All valves are factory tested and receipt inspected by AREVA. Factory-trained engineers stand ready to respond promptly to your questions and service needs, providing component selection, troubleshooting, and training for customer personnel.

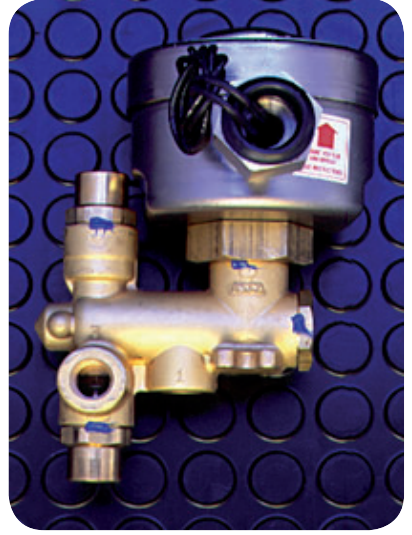
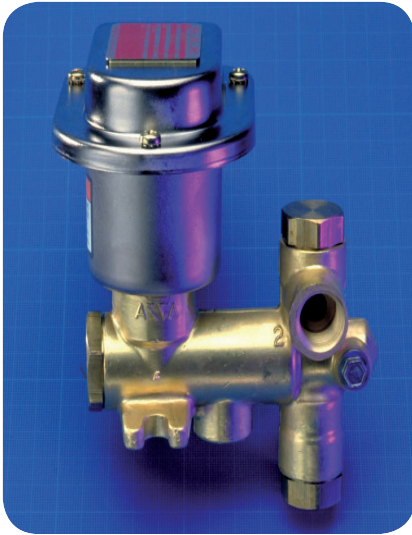
Genuine ASCO Components

Our ASCO nuclear-grade valves are designed and qualified to meet the most severe environmental and operating conditions. With hundreds of model numbers to choose from, NPC has an ASCO solenoid valve for your specific application. In short, NPC serves as your one-source supplier for all of your ASCO valve-related needs.



Features and Benefits

- Qualified and experienced engineering support
- Immediate availability of commercial and nuclear-grade valves – 24 hours a day, seven days a week
- Necessary documentation included with each nuclear-grade valve
- Qualified engineering expertise provides maintenance or troubleshooting for valve problems



Visit the Nuclear Parts Center
website at us.aveva.com/cisweb.

AREVA Inc.
7207 IBM Drive, Charlotte, NC 28262

For more information, contact
Ron Jaworowski, PMP
Product Development Manager
AREVA – Nuclear Parts Center
Office: (704) 805-2180 – Fax: (434) 382-6115 – Cell: (704) 877-8450
Ronald.Jaworowski@areva.com

or your VP, Key Accounts:
Tel: (704) 805-2305 – Fax: (434) 382-5629
regional.manager@areva.com
us.aveva.com

The data and information contained herein are provided solely for illustration and informational purposes and create no legal obligations by AREVA. None of the information or data is intended by AREVA to be a representation or a warranty of any kind, expressed or implied, and AREVA assumes no liability for the use of or reliance on any information or data disclosed in this document. © 2014 AREVA Inc. All rights reserved.