

The EMPATH software provides spectral analysis of all inputs.

Inputs

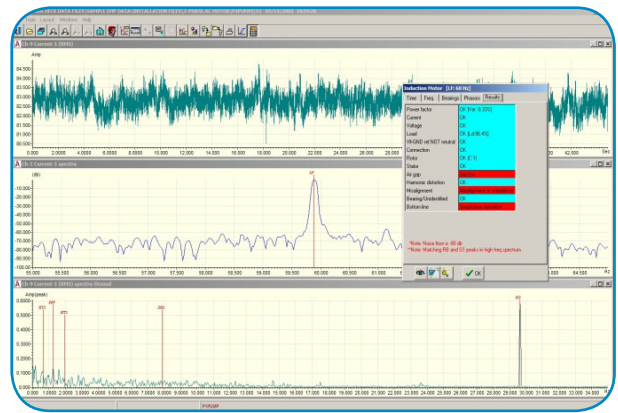
- Three Phases of Current (A,B,C)
- Three Phases of Voltage (A,B,C)
- Two Auxiliary Inputs

Outputs

- Three Conditioned Currents (A,B,C)
- Three Conditioned Voltages (A,B,C)
- Phase A RMS Current Level
- Phase A RMS Demodulated MCSA Signal
- Two Isolated Auxiliary Signals

Software

- Automatically marks traces
- Automatically tunes acquisition hardware for the incoming signals
- Adjusts sampling frequency and length of input sample
- Displays time and frequency data with cursors to read actual values
- Retrieves past data and compares with present data via plot overlays
- Comes with built-in
 - Tracking and trending database
 - Motor and bearing database
 - Motor enclosure and efficiency database



In the “High Frequency” data, EMPATH provides three phases of current and voltage and their associated spectra. An automatic on-screen assessment of the motor health is performed immediately after the data acquisition.

Benefits

- EMPATH hardware is CE-qualified.
- EMPATH provides unique algorithms that can reliably detect the early stages of rotor bar failures in induction motors.
- EMPATH saves time and precludes plant walkdowns by monitoring plant motors and driven machinery from a central motor control center.
- Auxiliary channels allow acquisition and analysis of data from a variety of other sources such as accelerometers, proximity probes or process measurements. This information, properly analyzed, can greatly enhance a predictive maintenance program.
- The EMPATH System permits data acquisition and analysis of not only AC induction motors but also DC motors, synchronous motors, generators and transformers. Efficient energy utilization is also indicated by the EMPATH analysis routines.

AREVA Inc. Corporate Headquarters
7207 IBM Drive
Charlotte, NC 28262

For more information,
contact your VP, Key Accounts:
Tel: 704 805 2410 – Fax: 434 382 5629
regional.manager@areva.com
www.us.areva.com

EMPATH™ is a trademark of AREVA Inc. The data and information contained herein are provided solely for illustration and informational purposes and create no legal obligations by AREVA. None of the information or data is intended by AREVA to be a representation or a warranty of any kind, expressed or implied, and AREVA assumes no liability for the use of or reliance on any information or data disclosed in this document. © 2013 AREVA Inc. All rights reserved.